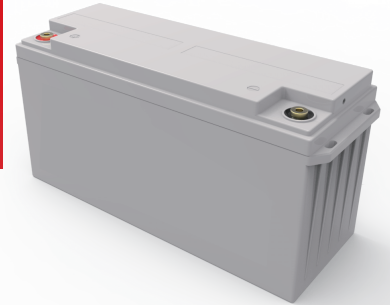


# DM Series

## 6-DM-165 12V165Ah

DM series battery uses latest AGM technology with longer cycle life. It is suitable for large current and deep cyclic applications. It can be used in e-vehicles, sightseeing, golf and logistics cars.



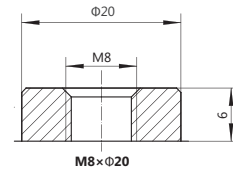
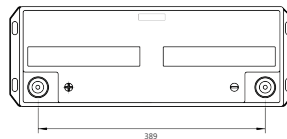
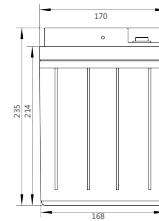
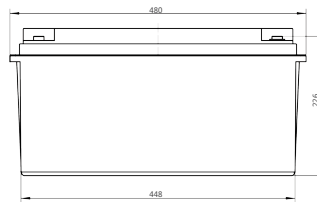
### Benefits

- Up to 700 cycles 80% DOD
- Good large current discharge performance
- High gas recombination efficiency
- Maximum charge efficiency
- Low self-discharge rate
- Easy installation and handling

### Applications

- Electrical Vehicle
- Mixture Electrical vehicle

### Drawing



### Standards

- GB/T 18332.1
- QC/T 742
- IEC61982-3
- GB/T 7403.1
- GB/T 23636

### Specifications

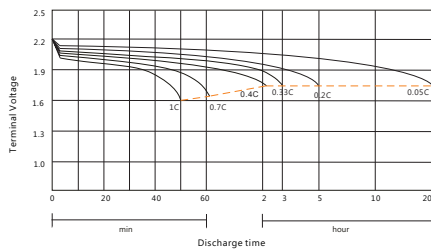
|                                       |  |                    |                     |                   |
|---------------------------------------|--|--------------------|---------------------|-------------------|
| Battery Model                         | 6-DM-165                                     |                    |                     |                   |
| Design Life (80% DOD)                 | 700 cycles                                   |                    |                     |                   |
| Capacity (Ah, 25°C)                   | 20HR (8.65A, 1.75V)                          | 5HR (33.0A, 1.75V) | 3HR (50.0A, 1.75V)  | 2HR(67.5A, 1.75V) |
|                                       | 173  | 165                | 150                 | 135               |
| Dimensions (mm)                       | Length                                       | Width              | Height              | Total Height      |
|                                       | 480  | 170                | 235                 | 235               |
| Approx. Weight (kg)                   | 52.0   |                    |                     |                   |
| Reference Internal Resistance (mΩ)    | 3.8 ( full charged @ 25°C)                   |                    |                     |                   |
| Maximum Discharge Current (A/10 Sec.) | 1340   |                    |                     |                   |
| Self-Discharge (25°C)                 | < 3% per month                               |                    |                     |                   |
| Charge Voltage (V/cell, 25°C)         | Cycle use                                    |                    | Float use           |                   |
|                                       | 2.45 (-3mV/°C/cell), max charge current: 25A |                    | 2.35 (-3mV/°C/cell) |                   |

## Discharge Data

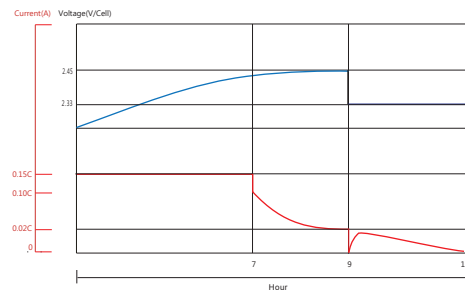
| Constant Current Discharge Data (25°C, A) |       |       |       |       |       |       |       |       |       |       |       |
|---|-------|-------|-------|-------|-------|-------|-------|-------|-------|-------|-------|
| End Voltage (V/cell)                      | min   |       |       |       |       | h     |       |       |       |       |       |
|   | 10    | 20    | 30    | 45    | 60    | 1.5   | 2     | 3     | 5     | 10    | 20    |
| 1.60                                      | 464.6 | 266.1 | 193.2 | 158.0 | 122.6 | 85.37 | 68.11 | 50.41 | 33.24 | 17.30 | 8.692 |
| 1.65                                      | 450.1 | 262.1 | 192.1 | 157.4 | 122.2 | 85.06 | 67.91 | 50.27 | 33.15 | 17.26 | 8.672 |
| 1.70                                      | 440.6 | 259.7 | 191.3 | 156.8 | 121.7 | 84.82 | 67.74 | 50.15 | 33.07 | 17.23 | 8.657 |
| 1.75                                      | 427.8 | 255.8 | 190.0 | 156.0 | 121.2 | 84.50 | 67.50 | 50.00 | 33.00 | 17.20 | 8.650 |
| 1.80                                      | 406.2 | 244.4 | 182.5 | 150.4 | 117.4 | 82.18 | 65.91 | 49.00 | 32.53 | 17.01 | 8.592 |

| Constant Current Discharge Data (25°C, W/cell) |       |       |       |       |       |       |        |       |       |       |       |
|--|-------|-------|-------|-------|-------|-------|--------|-------|-------|-------|-------|
| End Voltage (V/cell)                           | min   |       |       |       |       | h     |        |       |       |       |       |
|  | 10    | 20    | 30    | 45    | 60    | 1.5   | 2      | 3     | 5     | 10    | 20    |
| 1.60   | 816.2 | 479.1 | 355.0 | 294.8 | 232.0 | 163.6 | 131.97 | 98.83 | 65.73 | 34.42 | 17.34 |
| 1.65   | 805.1 | 479.3 | 357.4 | 297.0 | 233.2 | 164.0 | 132.35 | 99.03 | 65.79 | 34.42 | 17.34 |
| 1.70   | 799.3 | 480.5 | 359.7 | 299.1 | 234.4 | 164.8 | 132.97 | 99.29 | 65.91 | 34.48 | 17.37 |
| 1.75   | 786.8 | 479.3 | 361.3 | 300.4 | 235.5 | 165.6 | 133.54 | 99.55 | 66.00 | 34.50 | 17.40 |
| 1.80   | 761.7 | 464.3 | 350.7 | 292.3 | 230.2 | 162.2 | 130.9  | 97.81 | 65.24 | 34.23 | 17.32 |

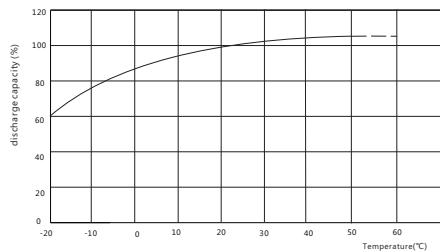
## Performance Curve



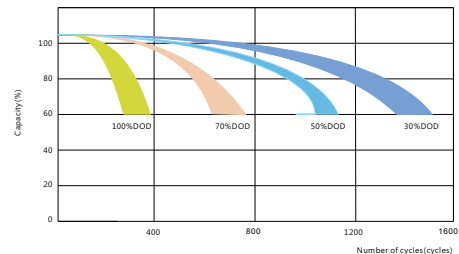
Discharging performance



Charge performance



Discharge capacity vs. temperature



Cycles vs. discharge depth

### Sacred Sun Power Sources Co., Ltd.

Add: No.1 Shengyang Road, Qufu 273100 PRC  
Tel: +86-537-4422313 Fax: +86-537-4411980  
Email: sales@sacredsun.cn

### Sacred Sun Hong Kong Co., Limited

Add: RM 19C Lockhart CTR 301-307 Lockhart RD Wan Chai, Hong Kong  
Email: admin.hk@sacredsun.hk

### Sacred Sun Asia Pacific Pte Ltd.

Add: 1 Ubi View, #04-12, Focus One, Singapore 408555  
Email: admin.sg@sacredsun.sg

### Sacred Sun Europe SARL

Add: ZAE Fontaine, 33210 Fargues, France  
Email: admin.eu@sacredsun.eu

### Sacred Sun MEA FZE

Add: No. 311 office, Building LOB 14, JAFZA, Dubai, UAE  
Email: admin.ae@sacredsun.ae